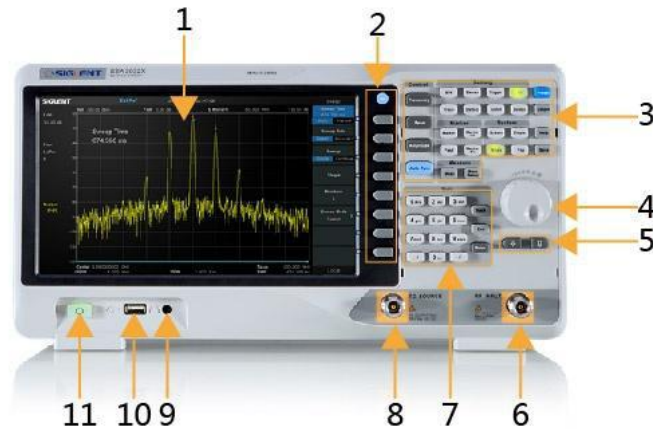


SSA3000X Plus Firmware Revision History

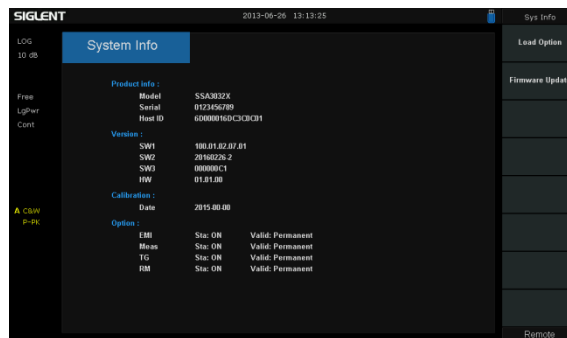
| Version | Revision |
|--------------------------|---|
| V2.2.1.2.8 2020/06/30 | <p>New Functionality:</p> <ul style="list-style-type: none">• Update EMI option to a new EMI measurement mode <p>Improvements:</p> <ul style="list-style-type: none">• Improve TG output harmonic performance• Update Help file <p>Solved Issues:</p> <ul style="list-style-type: none">• Fix ADC overload warning• Fix Ch Power calculation bug in small span |
| V2.2.1.2.7 2020/05/12 | <p>Improvements:</p> <ul style="list-style-type: none">• Add Limit mask offset in SA mode• TG Level adjustable in Reflection Meas <p>Solved Issues:</p> <ul style="list-style-type: none">• Fixed AM and FM symbol rate error, Lpf coefficient error, in AMA mode• Fixed Filter bandwidth error in DMA mode• Fixed Freq counter error in SA mode• Fixed Harmonic error in SA mode• Help Display error |
| V2.2.1.2.5 2019/11/11 | <p>Improvements:</p> <ul style="list-style-type: none">• Optimize trace, marker, signal track, TG normalization , Reflection measurement in SA Mode• Optimize web server UI <p>Solved Issues:</p> <ul style="list-style-type: none">• Fixed video trigger fail, errors in Harmonic measurement in SA Mode• Fixed spectrum amplitude error, meas error, waveform discontinue in MA Mode• Fixed English help, system message |
| | |

Update Instructions

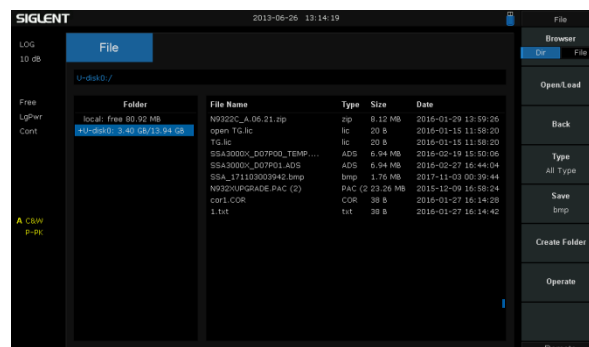
- Copy the update file (*.ads) to a FLASH type U-disk, and then connect the U-disk to the USB host port(10) of the instrument.

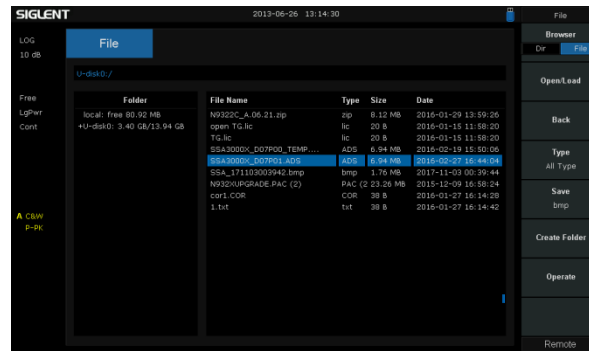


- Press the **System** key on the front panel, and then softkey “System->System Info-> Firmware Update”, to enter the interface of the file browser.

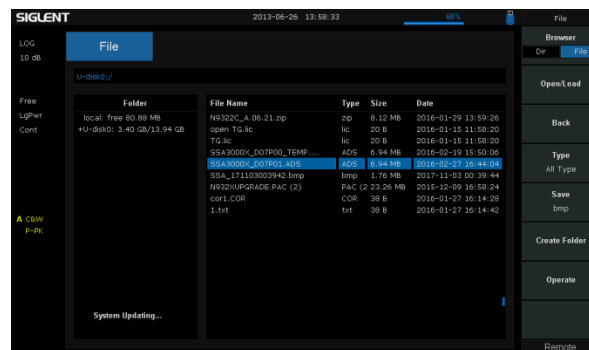


- Select “ U-disk” thru the knob on the front panel, press “Browser”, and then select the correct **ADS file** using the knob





- Press "Open/Load" to start the update. A progress bar is displayed during the update. When updating complete, the spectrum analyzer will restart automatically.



WARNING:

DO NOT shut down the instrument during updating